



ONH-2000

Oxygen / Nitrogen / Hydrogen Determinator

- Oxygen, nitrogen and hydrogen analysis with one analyser
- Total and fractional analysis for oxides and nitrides separation
- Hot extraction analysis of residual hydrogen
- Easy to replace economic upper electrode insert
- Hot zone at the crucible's bottom due to graphite tip
- Grain and drillings analysis without tin capsules
- PC controlled
- High temperature electrode impulse furnace for metals and ceramics analysis



ON-900

Oxygen / Nitrogen Determinator

- Total and fractional analysis for oxides and nitrides separation
- Easy to replace economic upper electrode insert
- Hot zone at the crucible's bottom due to graphite tip
- Grain and drillings analysis without tin capsules
- PC controlled
- High temperature electrode impulse furnace for metals and ceramics analysis



OH-900

Oxygen / Hydrogen Determinator

- Oxygen and hydrogen analysis with one analyser
- Total and fractional analysis for oxides separation
- Hot extraction analysis of residual oxygen
- Easy to replace economic upper electrode insert
- Hot zone at the crucible's bottom due to graphite tip
- Grain and drillings analysis without tin capsules
- PC controlled
- High temperature electrode impulse furnace for metals and ceramics analysis

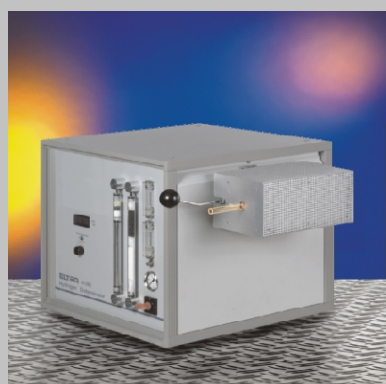


Dual Furnace Double Dual Range

CS-2000

Carbon / Sulfur Determinator

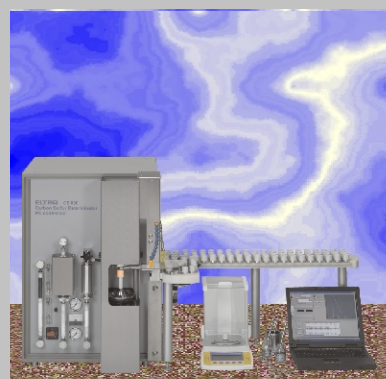
- Induction & resistance furnace in one system
- Four solid state infrared cells
- Infrared paths made of gold
- No halogen trap required
- Analysis of organics and inorganics
- Fractional analysis of free and bound carbon and sulfur
- Separation of inorganic and organic carbon
- Separation of sulfides and sulfates
- PC controlled
- Modular design



H-500

Hydrogen Determinator

- Determination of residual hydrogen
- PC controlled
- Dual range TC-cell
- Electronic flow control

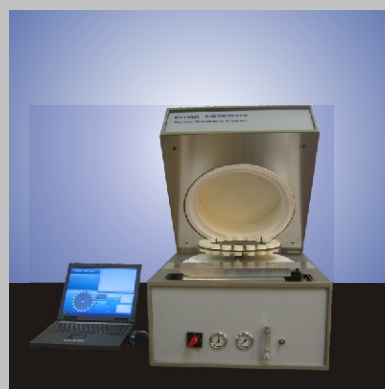


CS-800

Carbon / Sulfur Determinator

For metals and other inorganic materials

- Four solid state infrared cells
- No halogen trap required
- Automatic furnace cleaning
- Power controlled induction furnace
- PC controlled
- Up to 20 grams of copper samples without accelerators



Thermostep

Thermogravimetric Analyser

- Furnace 50-1000°C with 1°C resolution for 19 samples
- Balance with 0.0001 gram sensitivity, adapted for high temperatures
- 2 carousels, 20 crucibles and 20 crucible covers
- 2 Thermocouples for precise temperature control
- PC controlled
- PC with software, keyboard and mouse, TFT monitor
- Ergonomic design



Double Dual Range

CS-580

Carbon / Sulfur Determinator

- Four solid state infrared cells
- Infrared paths made of gold
- No halogen trap required
- Fractional analysis of free and bound carbon and sulfur
- Separation of inorganic and organic carbon
- Separation of sulfides and sulfates
- Furnace temperature up to 1550°C
- Electronic gas flow control
- PC controlled



Double Dual Range

CS-Multiphase

Carbon / Sulfur Determinator

- Four solid state infrared cells
- Infrared paths made of gold
- No halogen trap required
- Fractional analysis of free and bound carbon and sulfur
- Separation of inorganic and organic carbon
- Separation of sulfides and sulfates
- Furnace temperature up to 1550°C
- Electronic gas flow control
- PC controlled



CW-800

CO₂ / Water Determinator

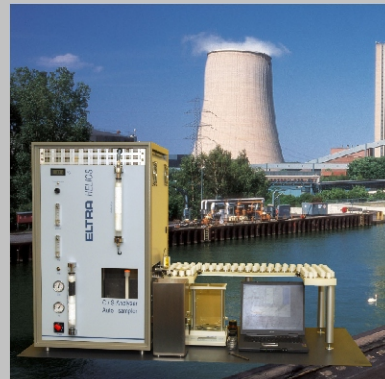
- PC controlled
- Dual range infrared cell
- No halogen trap required
- No influence of the water on the CO₂ result
- Electronic gas flow control
- Furnace temperature up to 1000°C



CHS-580

Kohlenstoff / Wasserstoff / Schwefel Analyser

- Simultane Analyse von Kohlenstoff, Wasserstoff und Schwefel
- Hohes Probengewicht (bis 500mg bei Kohle)
- Hochtemperaturofen bis 1550°C für korrekte Schwefelbestimmung
- Kurze Analysierzeit (90 Sekunden bei Kohleproben)
- Drei Infrarot-Zellen
- Küvetten aus Gold
- Keine Halogenfalle erforderlich
- PC-gesteuert
- Elektronische Durchflussregelung



HELIOS

Carbon / Sulfur Determinator

- Four solid state infrared cells
- Infrared paths made of gold
- No halogen trap required
- Fractional analysis of free and bound carbon and sulfur
- Separation of inorganic and organic carbon
- Separation of sulfides and sulfates
- Furnace temperature up to 1550°C
- Electronic gas flow control
- PC controlled